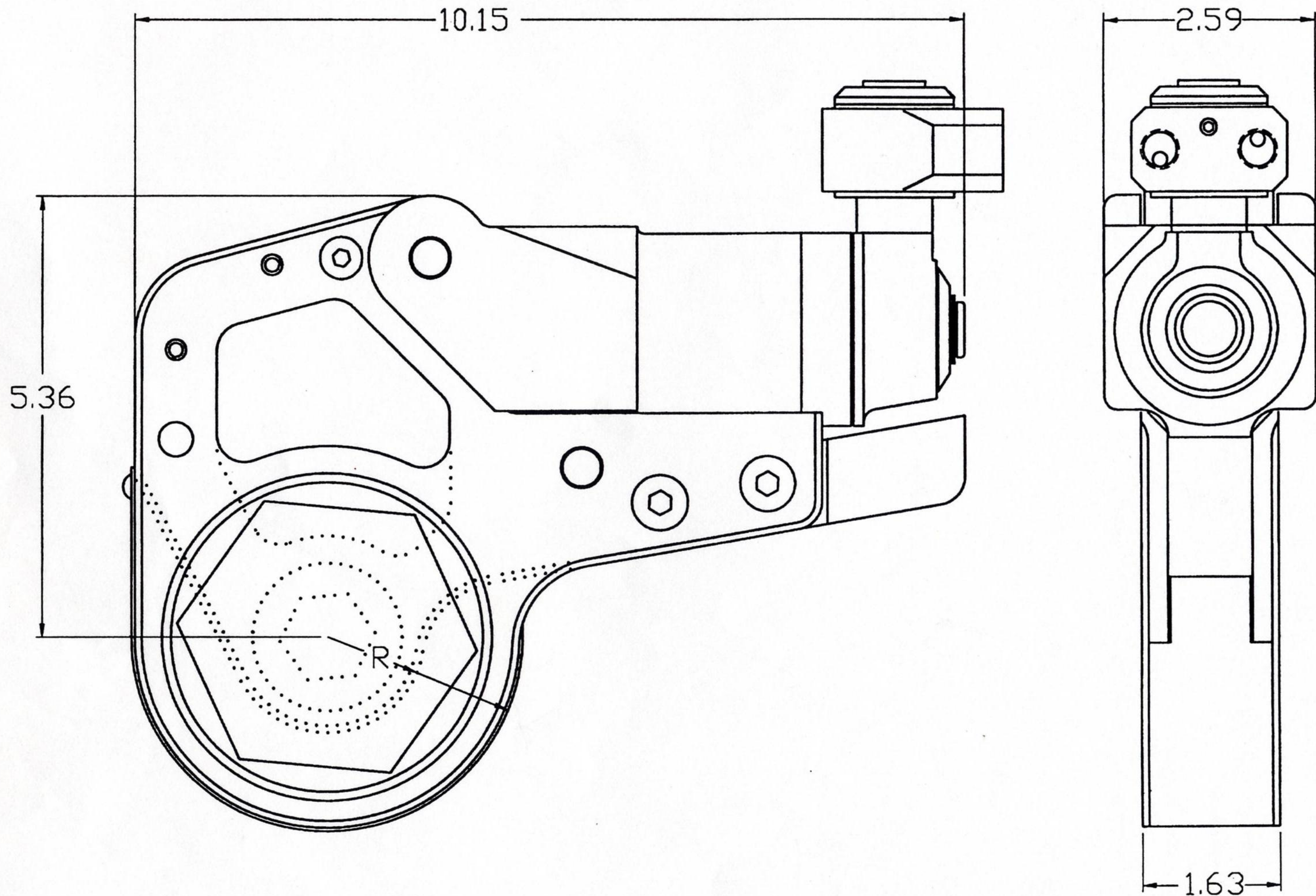


HYTORC

2XLCT—LINK OUTLINE DIMENSIONS

TOOL	R	HEX SIZE inch/mm	
2XLCT	—	—————	
LINK #1	1.00	3/4 / 19	TO 1 1/8 / 27
#2	1.08	1 3/16 / 30	TO 1 1/4 / 32
#3	1.18	1 5/16 / 34	TO 1 7/16 / 36
#4	1.29	1 1/2 / 38	TO 1 5/8 / 41
#5	1.40	1 3/4 / 44	TO 1 13/16 / 46
#6	1.51	1 7/8 / 49	TO 2 / 50
#7	1.62		TO 2 3/16 / 55
#8	1.73		TO 2 3/8 / 60

* RIGHT COLUMN IS MAX! HEX FOR LINK SIZE
 * HEX'S SHOWN ARE STANDARD/Common SIZES
 ANY SIZE UNDER MAX. CAN BE MADE

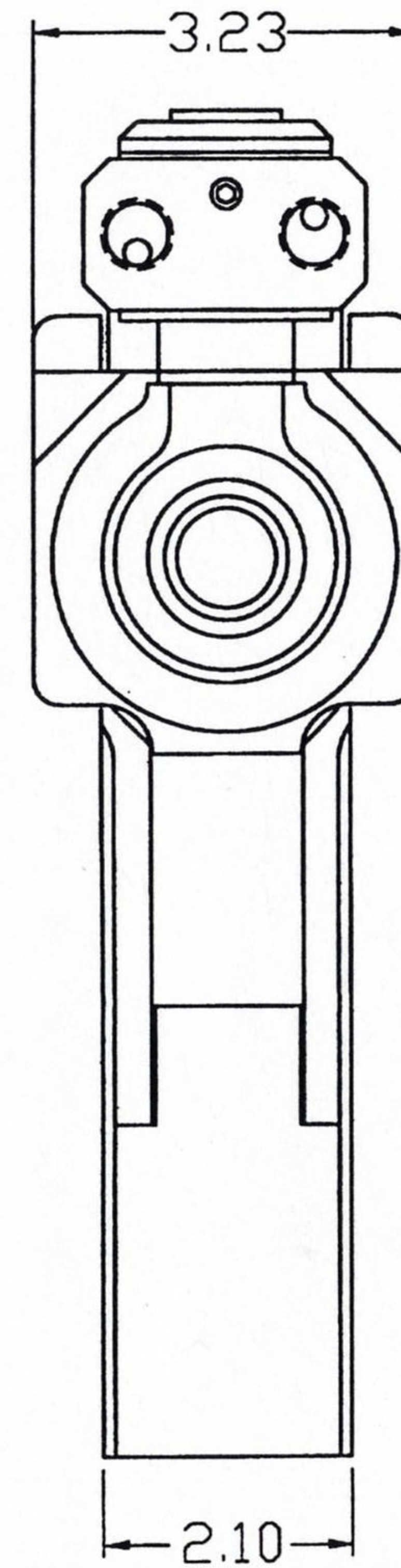
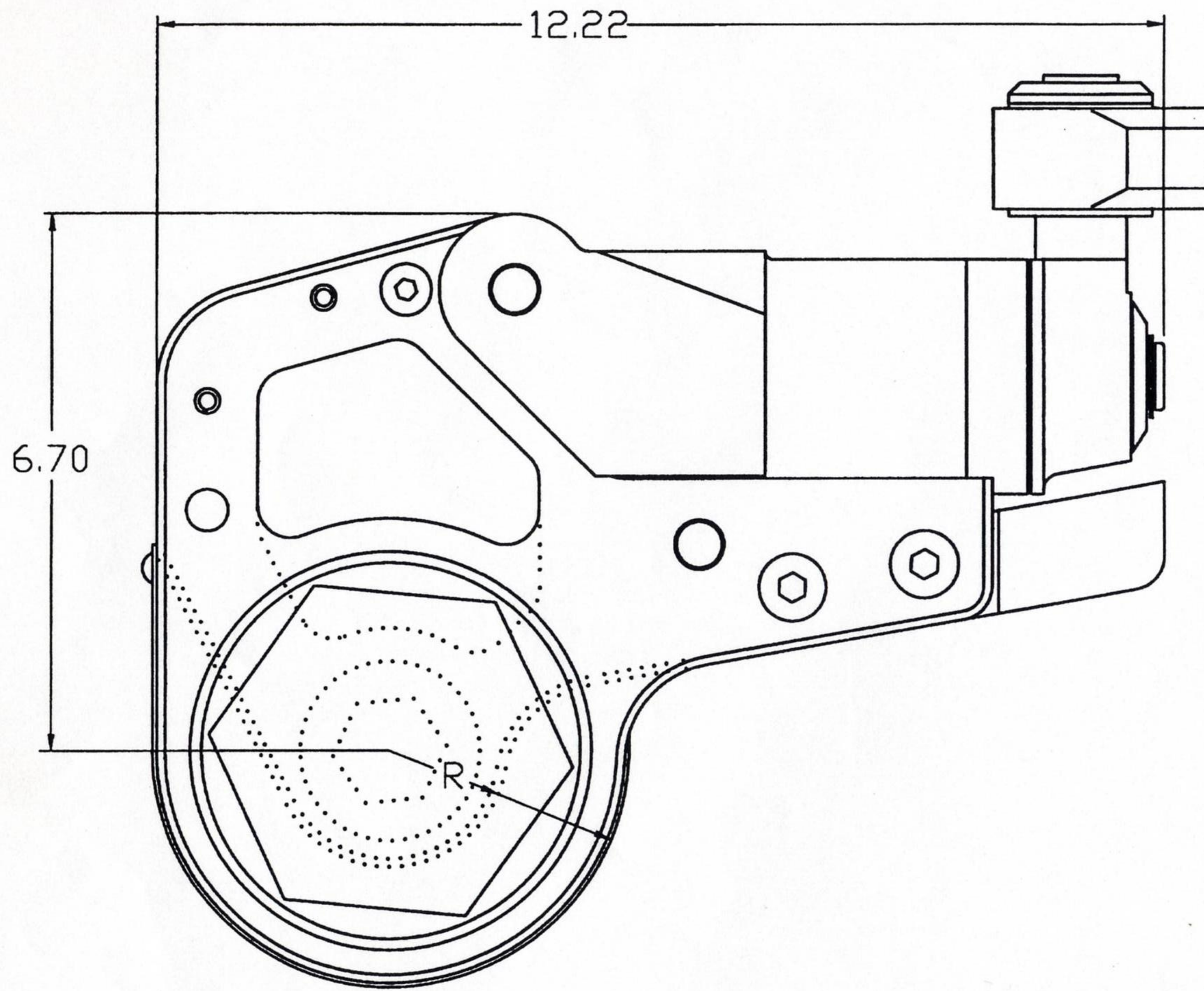


HYTORC

4XLCT-LINK OUTLINE DIMENSIONS

4XLCT	R	HEX SIZE inch/mm	
LINK #1	1.30	1 5/16 / 34	TO 1 7/16 / 36
#2	1.41	1 1/2 / 38	TO 1 5/8 / 41
#3	1.52	1 3/4 / 44	TO 1 13/16 / 46
#4	1.63	1 7/8 / 49	TO 2 / 50
#5	1.74	*	TO 2 3/16 / 55
#6	1.85		TO 2 3/8 / 60
#7	1.96		TO 2 9/16 / 65
#8	2.07		TO 2 3/4 / 70
#9	2.18		TO 2 15/16 / 75
#10	2.30		TO 3 1/8 / 80

* RIGHT COLUMN IS MAX! HEX FOR LINK SIZE
 HEX'S SHOWN ARE STANDARD/COMMON SIZES
 ANY SIZE UNDER MAX. CAN BE MADE

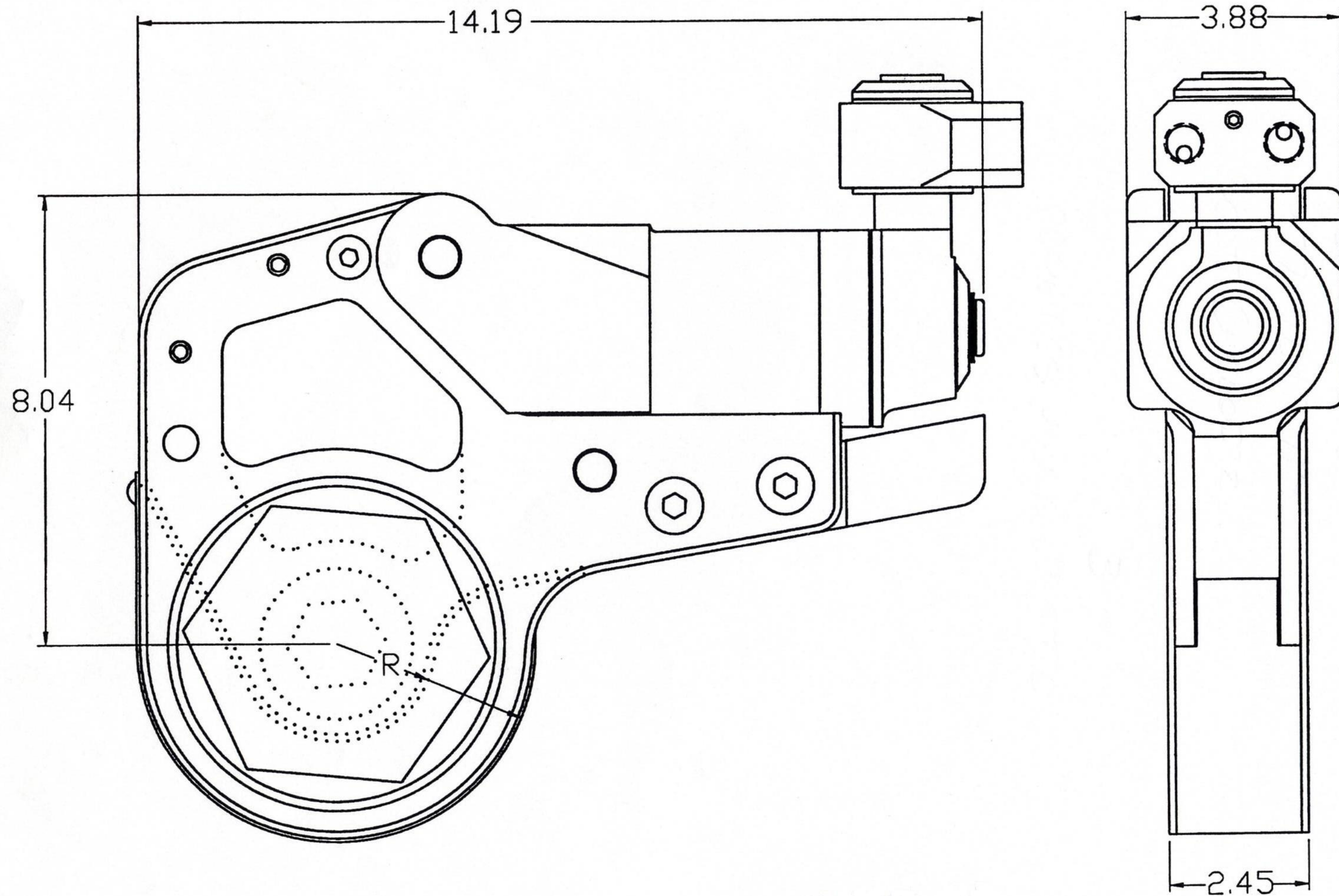


HYTORC

8XLCT-LINK OUTLINE DIMENSIONS

8XLCT	R	HEX SIZE	inch/mm
LINK #1	1.74	TO	2 / 50
#2	1.85	TO	2 3/16 / 55
#3	1.96	TO	2 3/8 / 60
#4	2.07	TO	2 9/16 / 65
#5	2.18	TO	2 3/4 / 70
#6	2.30	TO	2 15/16 / 75
#7	2.41	TO	3 1/8 / 80
#8	2.53	TO	3 3/8 / 85
#9	2.64	TO	3 1/2 / 90
#10	2.76	TO	3 3/4 / 95
#11	2.87	TO	3 7/8 / 100

* RIGHT COLUMN IS MAX! HEX FOR LINK SIZE
 * HEX'S SHOWN ARE STANDARD/COMMON SIZES
 ANY SIZE UNDER MAX. CAN BE MADE

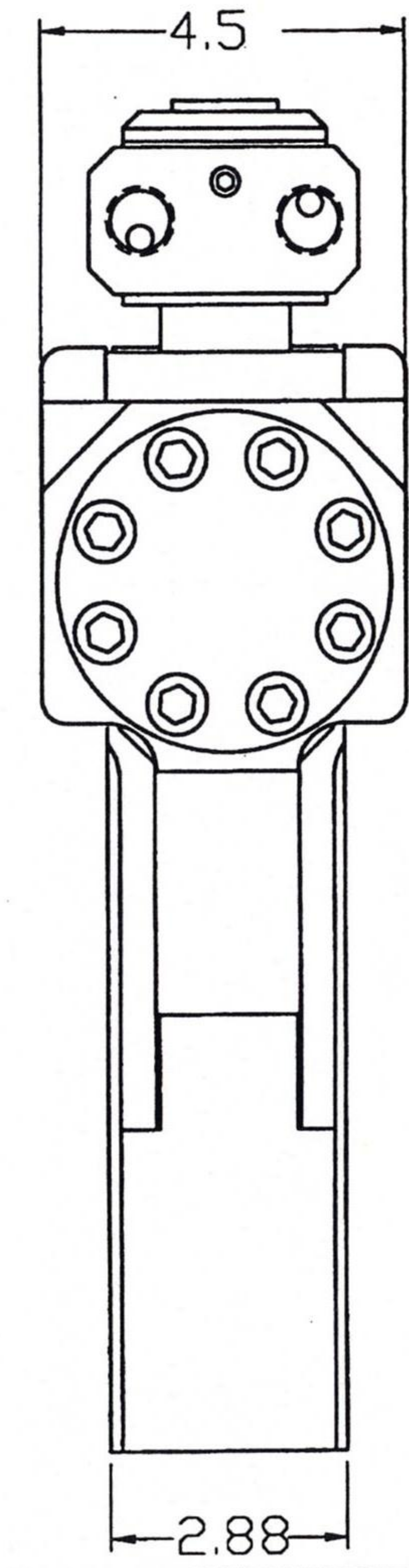
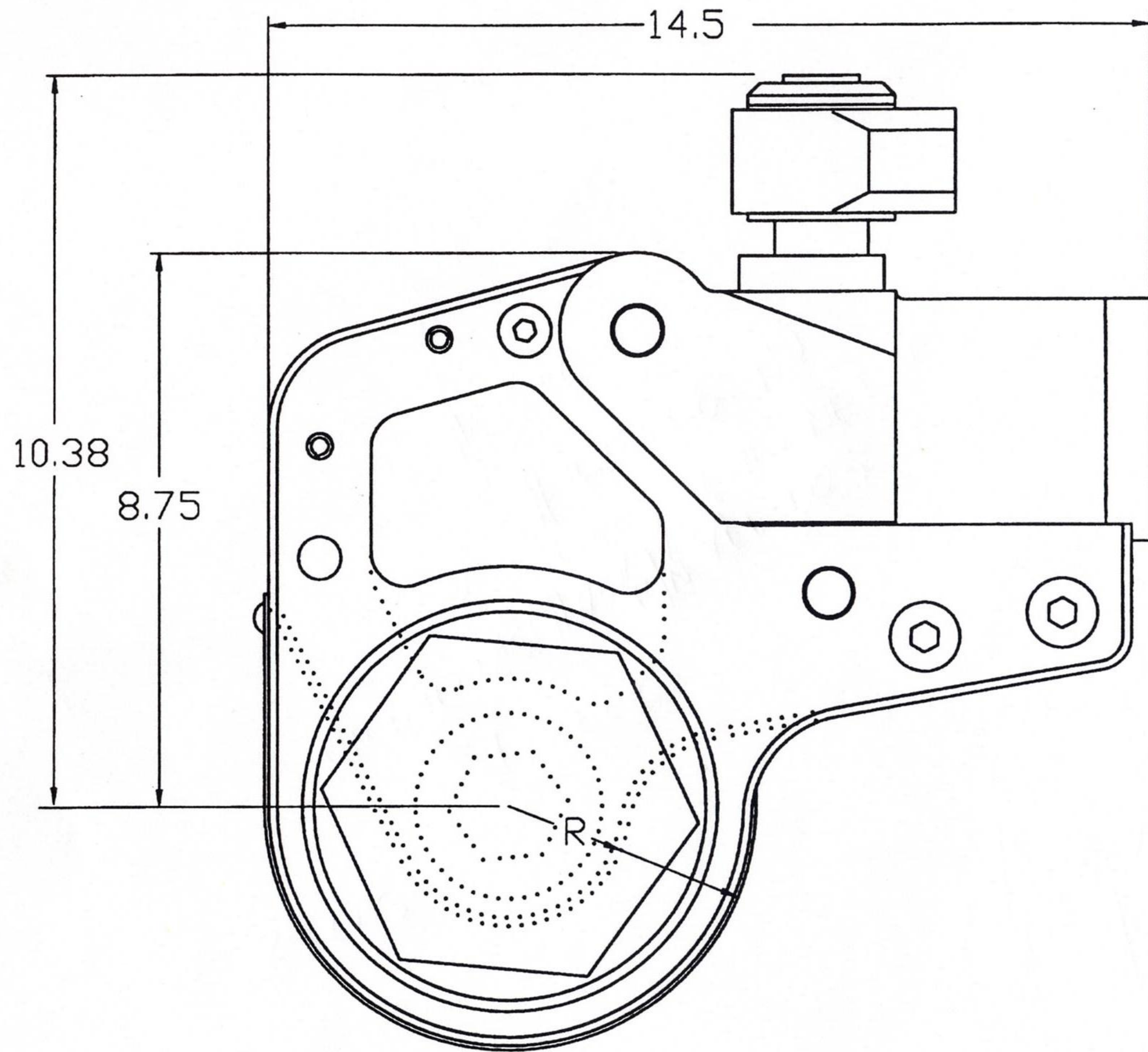


HYTORC

14XLCT-LINK OUTLINE DIMENSIONS

14XLCT	R	HEX SIZE inch/mm	
LINK #1	2.30	TO	2 3/4 / 70
#2	2.41	TO	2 15/16 / 75
#3	2.53	TO	3 1/8 / 80
#4	2.65	TO	3 3/8 / 85
#5	2.75	TO	3 1/2 / 90
#6	2.88	TO	3 3/4 / 95
#7	2.98	TO	3 7/8 / 100
#8	3.10	TO	4 1/8 / 105
#9	3.21	TO	4 1/4 / 110
#10	3.44	TO	4 5/8 / 120

* RIGHT COLUMN IS MAX! HEX FOR LINK SIZE
 * HEX'S SHOWN ARE STANDARD/COMMON SIZES
 ANY SIZE UNDER MAX. CAN BE MADE

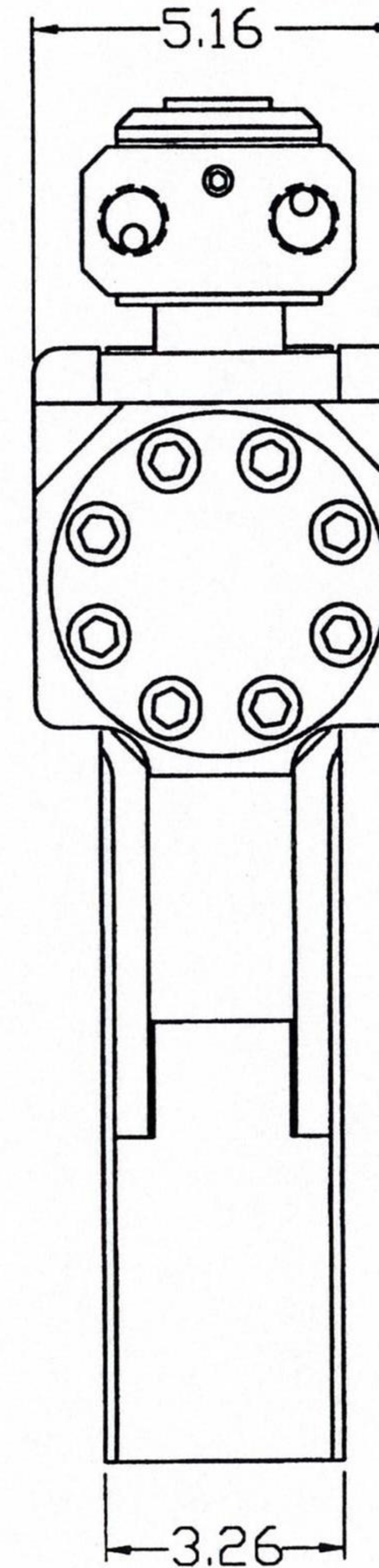
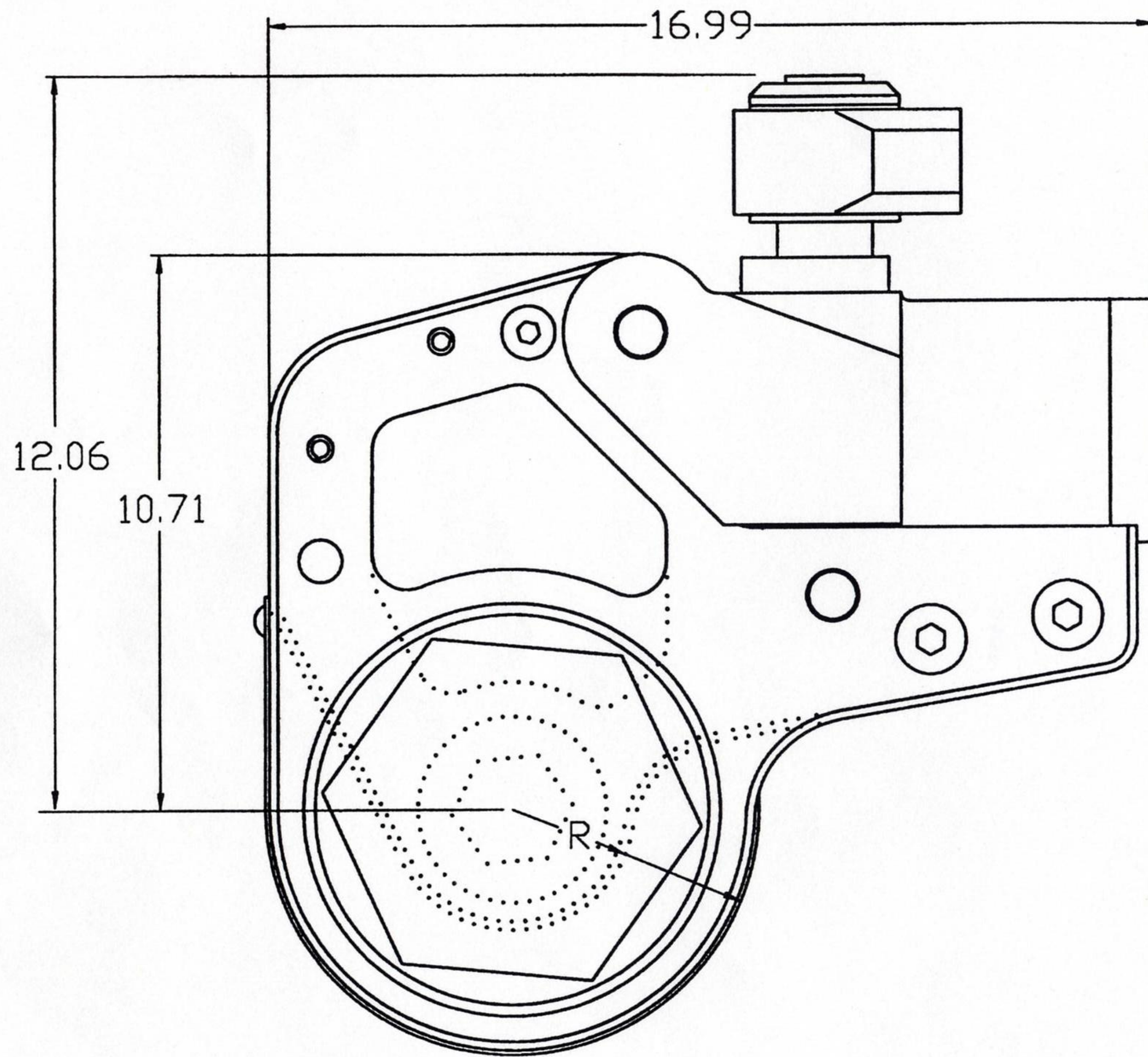


HYTORC

18XLCT-LINK OUTLINE DIMENSIONS

18 XLCT	R	HEX SIZE inch/mm
LINK #1	2.54	TO 2 15/16 / 75
#2	2.65	TO 3 1/8 / 80
#3	2.88	TO 3 1/2 / 90
#4	3.11	TO 3 7/8 / 100
#5	3.34	TO 4 1/4 / 110
#6	3.56	TO 4 5/8 / 120
#7	3.78	TO 5" / 130
#8	3.95	TO 5 3/8 / 135
#9	4.17	5 3/4 / 145
#10	4.39	6 1/8 / 155

* RIGHT COLUMN IS MAX! HEX FOR LINK SIZE
 * HEX'S SHOWN ARE STANDARD/COMMON SIZES
 ANY SIZE UNDER MAX. CAN BE MADE

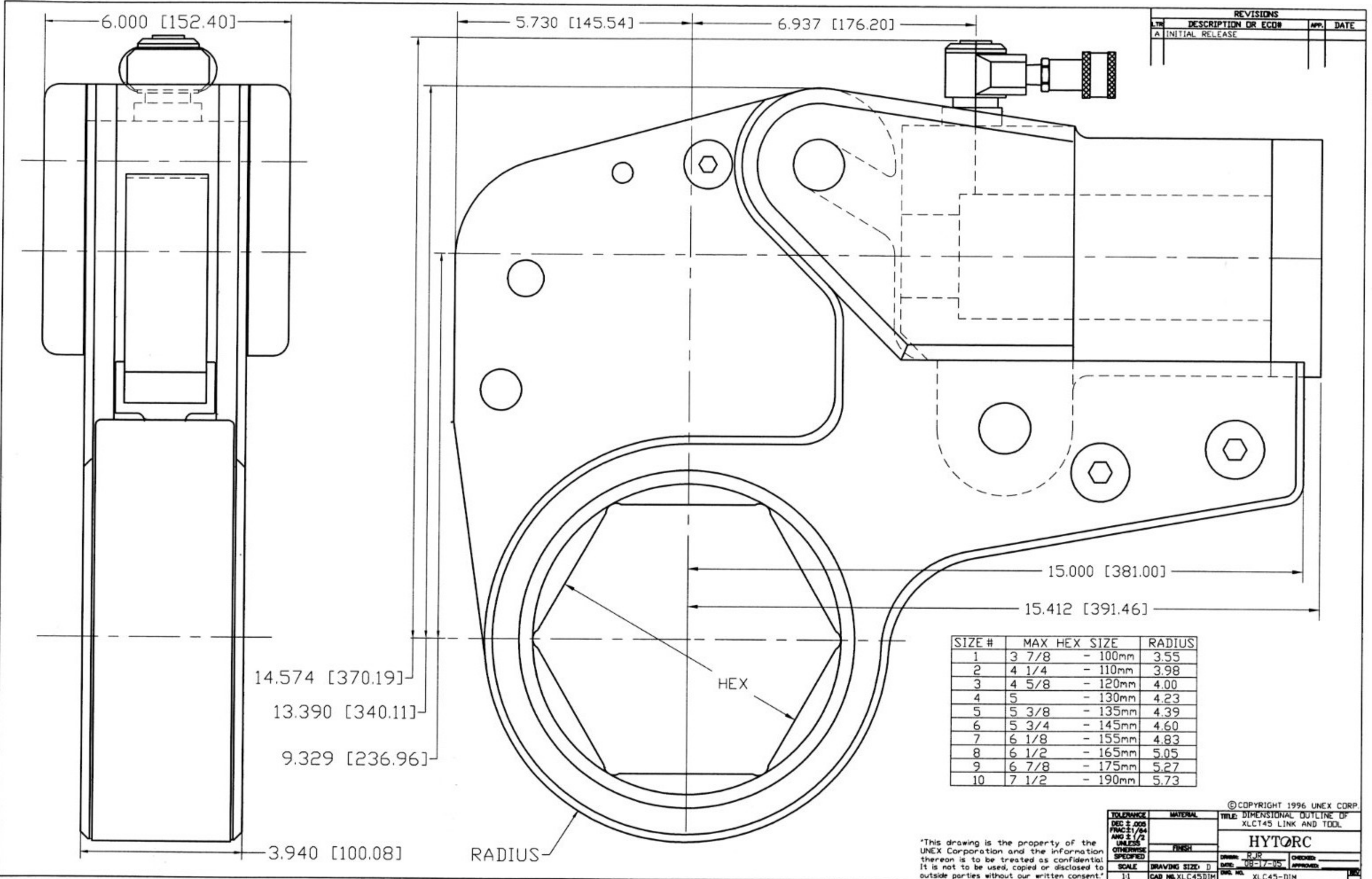


HYTORC

30XLCT-LINK OUTLINE DIMENSIONS

30XLCT	R	HEX SIZE inch/mm	
LINK #1	2.98	TO	3 1/2 / 90
#2	3.21	TO	3 7/8 / 100
#3	3.44	TO	4 1/4 / 110
#4	3.67	TO	4 5/8 / 120
#5	3.89	TO	5" / 130
#6	4.05	TO	5 3/8 / 135
#7	4.27	TO	5 3/4 / 145
#8	4.49	TO	6 1/8 / 155

* RIGHT COLUMN IS MAX! HEX FOR LINK SIZE
 * HEX'S SHOWN ARE STANDARD/COMMON SIZES
 ANY SIZE UNDER MAX. CAN BE MADE



REVISIONS			
REV	DESCRIPTION OR ECOB	APP.	DATE
A	INITIAL RELEASE		

This drawing is the property of the UNEX Corporation and the information thereon is to be treated as confidential. It is not to be used, copied or disclosed to outside parties without our written consent.

TOLERANCE DEC ± .008 FRAC ± 1/64 ANG ± 1/2 UNLESS OTHERWISE SPECIFIED	MATERIAL	TITLE: DIMENSIONAL OUTLINE OF XLC45 LINK AND TOOL
SCALE 1:1	DRAWING SIZE: D	HYTORC
CAD NO. XLC45DIM	DATE: 08-17-05	DRW. NO. XLC45-DIM

© COPYRIGHT 1996 UNEX CORP.